

# Additive Manufacturing

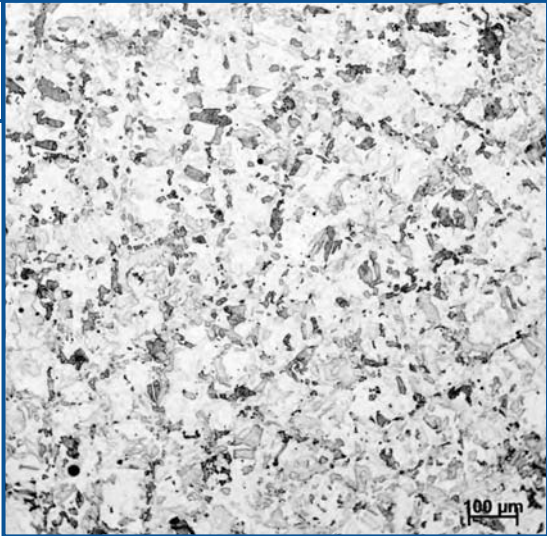
by Penn United Technologies, Inc.

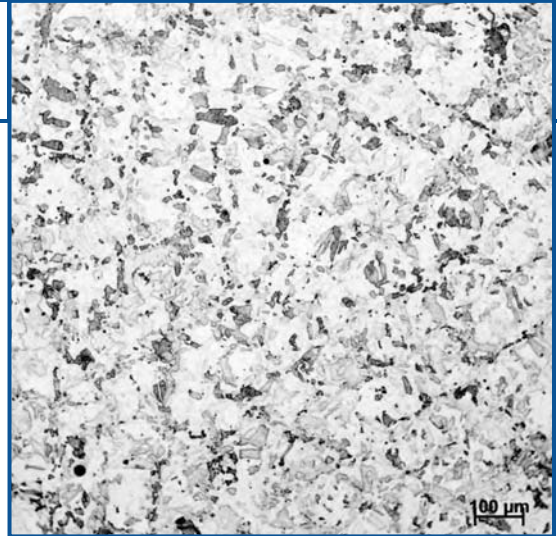
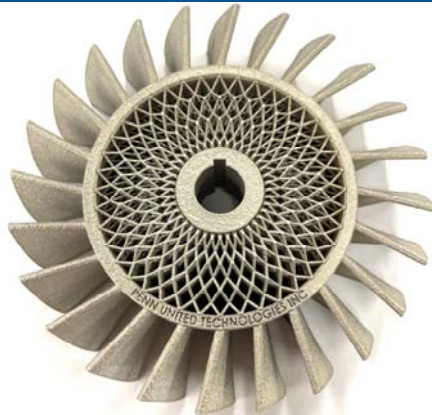
## 316L Stainless Steel

316L is a very common austenitic steel, known for its high corrosion resistance, strength, and weldability. It is commonly used in applications that require prolonged exposure to a corrosive or high temperature environment. Some of these applications include medical devices, fluid handling, energy, food processing, marine, and automotive.

Our additively manufactured 316L reflects all of the properties that drive the consistent use of this stainless grade.

Visit [www.pennunitedadditive.com](http://www.pennunitedadditive.com) for a complete list of available materials and AM services.

Tensile Strength	Yield Strength	Hardness	Relative Density	Etched 100x Microstructure
>80 ksi	>45 ksi	78-82 HRBW	>99.5%	



Production Standards Referenced: ASTM F3184, ASTM A666, UNS S31603, AMS 7039

Printed material properties may vary depending on specific geometry and thermal treatments.



799 North Pike Road, Cabot, PA 16023 - Phone: (724) 352-1507 Fax: (724) 352-4970 [www.pennunited.com](http://www.pennunited.com)